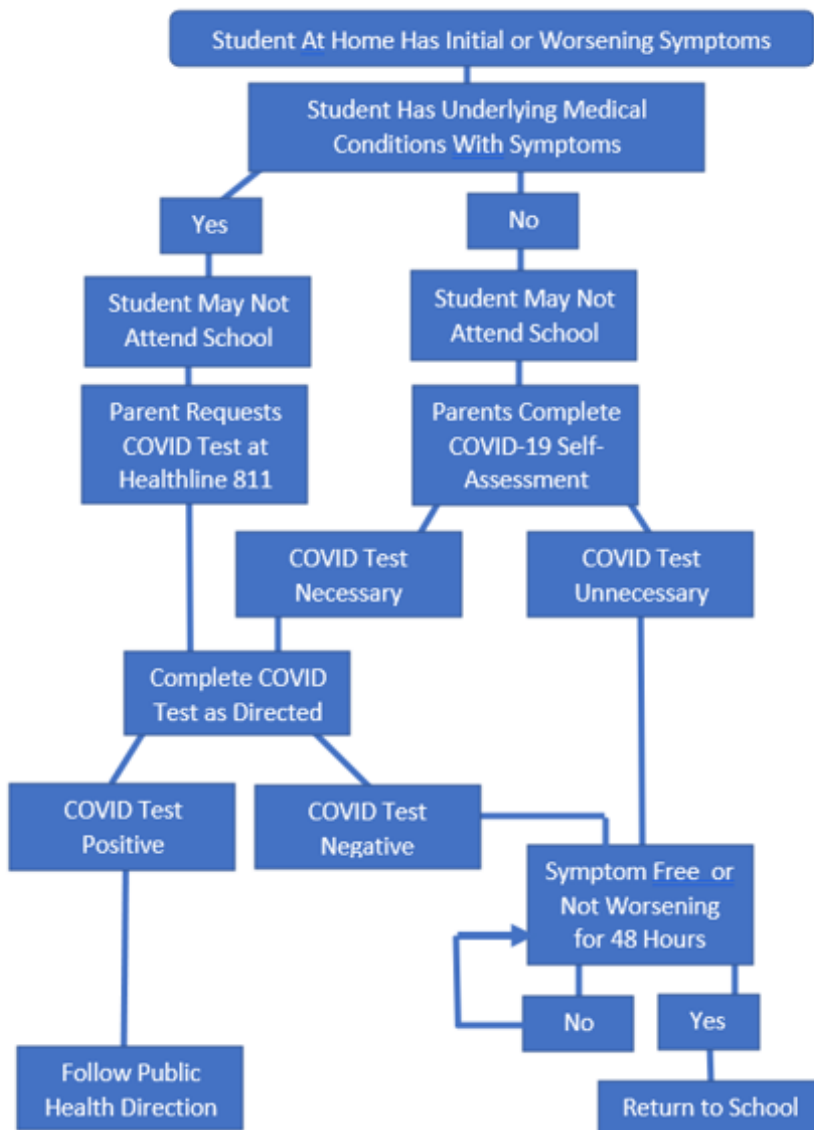


What happens when my child develops symptoms while they are at home?



Note for Parents: Some students may present with symptoms listed on this page because of seasonal allergies or other medical conditions. If your child has symptoms that are likely not COVID-related, please contact Healthline 811 to arrange for a COVID test. A negative test will reset the baseline for your child and they will not be sent home from school unless their symptoms worsen or additional symptoms become evident. Please notify the school of the date that a negative test result has been received with a description of underlying symptoms.