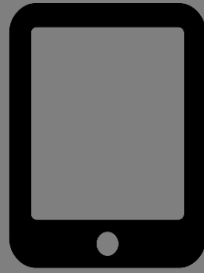




Glentworth Central School
 Box 100
 Glentworth, Saskatchewan S0H 1V0
 Telephone: (306)266-4804

“Caring is the Key!”

Remote Learning Opportunities...



If your child is unable to attend school, we will support them at home. Each of our classrooms has a Zoom video feed available

so that your child can attend class with all of their classmates virtually when they need to! All teachers will be using online materials for easy access on your child’s device at home.

Student Cohorts...

Schools are different from other public places because we get the same group of students every day. At our school,



student groups, or cohorts, will learn, play and eat together, and contact with other cohorts will be minimized. Recess and lunch schedules will look a bit different and student movement

around the school will be controlled to keep cohorts apart.

Contact Tracing...



Our teachers and bus drivers will have seating plans so that we are able to quickly identify close

contacts at school. Our log of essential visitors means we will know exactly who was in the school and when. Non-essential visitors and deliveries will not be allowed in the school.

**Our school’s plan for re-opening on September 8, 2020.
 We can’t wait to be #learningtogether!**

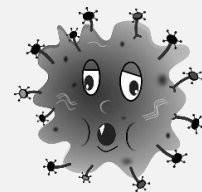
Emotional Support...



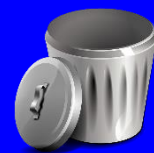
Children will respond to the transition back to school in different ways, and each of our classrooms will have additional programming to support children who have been away from school since March. Let us know if your child is having a difficult transition back to school. We can help!

Responding to Illness...

Children or staff who are sick will not be allowed at school until they have been symptom free for 48 hours or are confirmed to be COVID-19 negative. Our school has an isolation room and PPE available in the event that a child gets sick while at school. Through our Superintendent, we are working with the Saskatchewan Health Authority to ensure testing is available when needed.



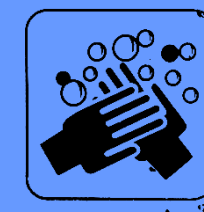
Enhanced Cleaning...



Our facilities staff will be doing additional cleaning at our school. In addition to regular cleaning, we will be sanitizing all high touch areas at least twice daily. Every classroom has sanitizing supplies in place, and teachers will help students learn how to keep their individual spaces clean and safe. Materials that can’t be cleaned regularly have been removed from our classrooms. Caretaking schedules will be adjusted to meet the needs of our school, and we have additional cleaning support available from Prairie South if we need it!

Focus on Hygiene...

All our washrooms with air dryers have had paper towel added so that students can practice safe hand washing. Every classroom has its own supply of hand sanitizer in addition to the personal bottles that students will bring, and our teachers will be implementing regular hand hygiene practices in every room. Hand hygiene before and after activities will ensure the safety of our students and staff.



Help From Parents and Caregivers...

We need your help! Extra support from parents and caregivers will ensure a successful year for all students:

- ✓ Don’t send your child(ren) on the bus unless you can’t drive them that day.
- ✓ Arrange for your child(ren) to come home for lunch when this is possible.
- ✓ Reinforce the need for good hand hygiene at home.
- ✓ Don’t send sick children to school.
- ✓ When the school asks you to pick up your child(ren), come immediately to pick them up.
- ✓ Make sure your child has a small bottle of hand sanitizer and a reusable mask (grades 4-12).
- ✓ Communicate with us by telephone, text or email rather than coming to the school.
- ✓ If your child(ren) are learning at home, help them when they need support.
- ✓ Let us know what we can do to support your child(ren) and your family!





1075 9th Avenue North West, Moose Jaw, SK S6H 1V7 P 306.694.1200 1.877.434.1200 F 306.694.4955 prairiesouth.ca

Prairie South Schools Mask Protocol 12 August 2020

Group	Mask Protocol
Grades PreK to 3 Students	Masks are not required. Parents may choose to provide masks for their children and school staff will support their use as practical during school hours.
Grades 4-12 Students	Masks are required during indoor transitions (hallways, bathroom visits, etc.) and on the school bus. Masks are required in classrooms where 15 or more staff and students are present.
Grades PreK to 3 Classroom Staff	Masks are not required in the classroom. Staff may choose to wear a mask. Masks are required during indoor transitions (hallways, bathroom visits, etc.)
Grades 4-12 Classroom Staff	Masks are required during indoor transitions (hallways, bathroom visits, etc.). Masks are required in classrooms where 15 or more staff and students are present.
Non-classroom staff and visitors to the school	Masks are required when students are present in common areas and during indoor transitions. Masks are required in classrooms when visiting multiple student cohorts. Staff may choose to mask at other times.

Exemptions

1. In circumstances where students of any age require physical support, PPE (including masks) may be used at the discretion of the student support team planning for that student.
2. Students and staff with a medical condition that makes mask use inappropriate or unsafe are exempt from this protocol.

Glentworth Central School

Bus Arrivals & Bell Times

- Arrival times will be staggered every 5 minutes
- Students will wash their hands upon arriving to the classroom
- School starts at 8:50am
- Lunch is 12:21pm – 1:00pm Elementary students (K – 6)
- Lunch is 12:21pm – 1:10pm High School students (7-12)
- School dismissal is 3:30pm
- Students will have staggered bus boarding times
- Procedures will be taught

Entry and Exit & Building Movement

- Entry/Exit procedures will be taught
- Hallways will have signage for movement patterns & reminders for social distancing
- Limited access to building for anyone other than staff and students
- **Teachers will be moving to students/students will remain in classrooms**

Supervision – Playground/shared spaces

- Staggered recesses to ensure cohorts remain separate

Lockers

- Minimal time spent at lockers – minimal supplies are being used and will be kept in classrooms

Staff List

Kathy Rieder – rieder.kathy@prairiesouth.ca
 Jennifer Nelson – nelson.jennifer@prairiesouth.ca
 Aimee McDowell – mcdowell.aimee@prairiesouth.ca
 Janet McCrea – mccrea.janet@prairiesouth.ca
 Brooke Stewart – stewart.brooke@prairiesouth.ca
 Robin Cooper – cooper.robin@prairiesouth.ca
 Tiu Rettman – rettman.tiu@prairiesouth.ca
 Marilyn Zak – zak.marilyn@prairiesouth.ca
 Treena Blake – blake.treena@prairiesouth.ca
 Sherri McCrea – mccrea.sherri@prairiesouth.ca
 Lorry Okraincee – okraincee.lorry@prairiesouth.ca
 Shawna Pluecks – pluecks.shawna@prairiesouth.ca
 Taylor Hawreschuk – hawreschuk.taylor@prairiesouth.ca

